

CO₂ ECO Heating Domestic System – An Overview



Outdoor Unit

The heart of SANYO's CO₂ ECO Heating System lies in the compact heat pump unit. Situated on an exterior wall it is extremely simple to install and benefits from quiet operation. Using only a small amount of electric power it takes around two thirds of its energy from the atmosphere. Even at ambient temperatures as low as -25°C enough heat is absorbed by the liquid CO₂ refrigerant to cause it to evaporate. The CO₂ gas is then pressurised in a compressor causing it's temperature to rise. This heat then transfers to water from the main supply and the CO₂ cools and condenses back to its liquid state then passes through an expansion valve and regains normal pressure ready to pass through the system again.



Indoor unit

The CO₂ ECO Tank Unit is a highly sophisticated hot water management system that simultaneously provides water at different temperatures for domestic hot water, radiator heating and under floor heating. It houses two electrical emergency heaters used only when outdoor temperatures drop below -25°C or there is an unusually high demand for hot water.



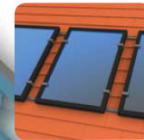
Radiators and under floor heating

Just like any other water heating system, CO₂ ECO Heating System connects to standard radiator fittings and under floor heating pipes to provide space heating. You can enjoy superb comfort all year round without the need for an inefficient electric back up heater even when temperatures outside are well below zero.



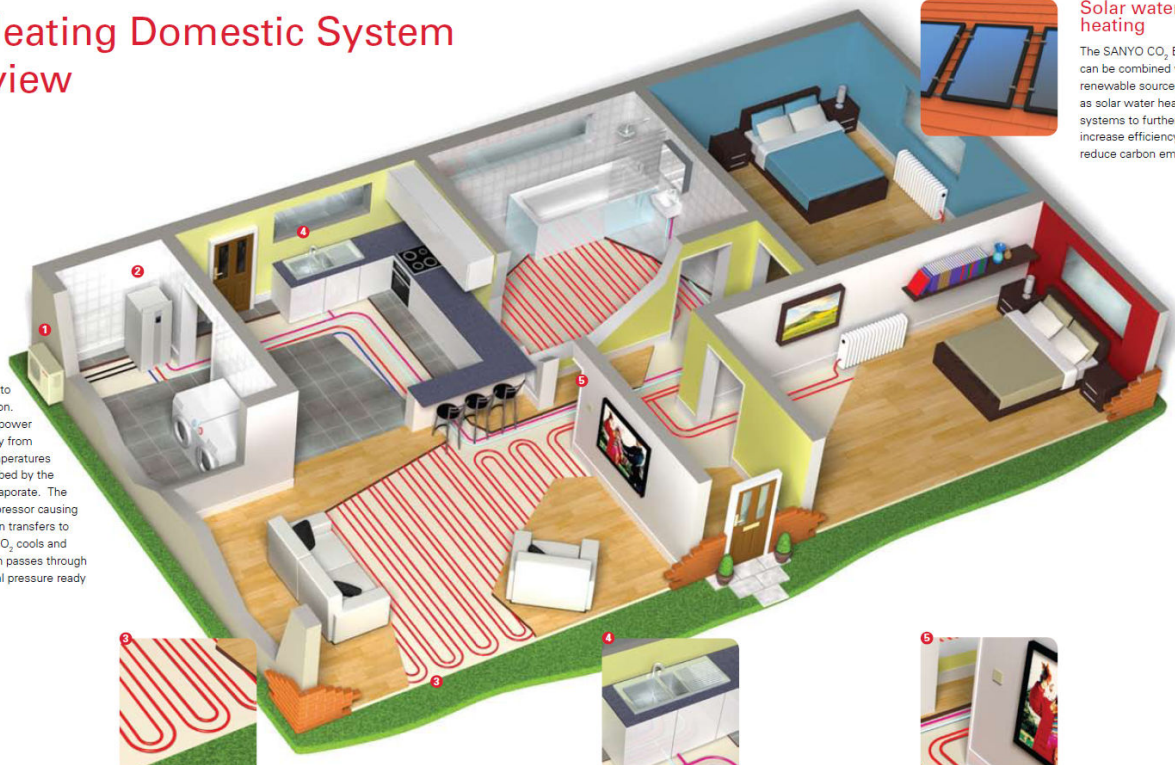
Hot water

The SANYO CO₂ ECO Heating System provides you with abundant hot water and, unlike heat pump systems from other manufacturers that use HFC refrigerants, it has a high working temperature of 65°C. This is sufficient to achieve the temperatures you need for showers and baths without the need for an electric booster heater – so you can enjoy low energy bills too.



Solar water heating

The SANYO CO₂ ECO can be combined with renewable sources such as solar water heating systems to further increase efficiency and reduce carbon emissions.



Ekonomisks ēkas vai dzīvokļa apkures risinājums

- Nodrošina telpu sildīšanu un siltā ūdens sagatavošanu
- Darbība pie zemas āra gaisa temperatūras, līdz pat -25°C
- Nezaudē apkures jaudu pateicoties nākotnes aukstumnesējam R744—videi draudzīgai CO₂ gāzei
- Japāņu SANYO 2-pakāpju kompresors ar DC invertora vadību
- Akumulācijas tvertnei ir iespējams saules kolektoru pievienojums
- Lietotājam draudzīga vadība ar nedēļas taimeru un nakts režīmu



CENA 6439

Tagad ar 30% atlaidi
4507 LVL*

Visai SANYO produkcijai ir ražotāja 5 gadu garantija!

Heat Pump Unit Specifications

Model number		HP Unit	4.5 kW Single Phase SHP-C45DEN				
Performance							
Water temp / flow return	°C		35°C / 25°C	65°C / 35°C			
Outdoor ambient	°C		15°C 7°C -5°C	15°C 7°C -5°C			
Capacity output	kW		4.82 5.10 5.30	4.90 4.90 5.18			
Input power	kW		1.21 1.37 1.82	1.60 2.10 2.60			
COP			4.00 3.70 2.90	3.10 2.40 2.00			
Electrical Ratings							
Power supply			1 ø / 230V / 50Hz				
Maximum current			1 x 16A				
Refrigerant / amount			R744 (CO ₂) / 1.4kg				
Operation noise			49.0 dB-A				
Compressor			DC Rotary 2 Stage				
Dimensions	Net H/W/D		690mm / 840mm / 290mm				
	Shipment H/W/D		765mm / 943mm / 433mm				
Weight	Net / Shipping		65kg / 72kg				

Tank Unit Specifications

Model number		Tank unit	4.5 kW Single Phase SHP-TH45GDN-SW	
Tank capacity			223L	
Maximum working pressure			2.5 bar	
Maximum working pressure tap water			10 bar	
Auxillary electric heater capacity			9.0kW + 6.0kW*	
Power supply			1 ø / 230V / 50Hz	
Maximum current			35A	
Dimensions	Net H/W/D		1,562mm / 600mm / 624mm	
	Shipment H/W/D		1,736mm / 700mm / 747mm	
Weight	Net / Shipping		160kg / 205kg	

*The 9kW is used during day periods of high demand.; 6kW is used for emergency!

SANYO sadarbības partneris:

- * -Cenas uzrādītas ieskaitot PVN (21%)
- Akcija spēkā kamēr prece ir Rīgas noliktavā
- Jautājiet vēl zemāku cenu pie SANYO partneriem

www.sanyo.lv e-pasts: info@sanyo.lv

